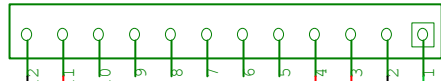


**HDR1X12  
NTX2**



**HDR1X2  
BNC**

BNC  
1 - RFOUT  
2 - RFGND

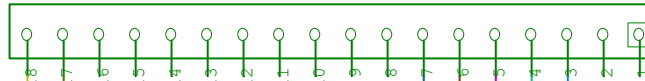
Arduino Sky Safari Mission

Andrea Germanà  
anerDev.net/assm

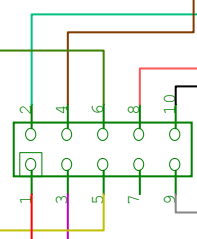
Bridge Shield Scheme

This scheme made with NI Multisim;  
the PCB made with NI Ultiboard.

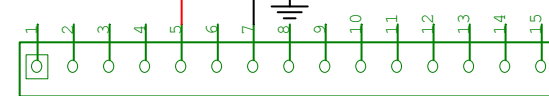
**HDR1X18  
Arduino Strip Top**



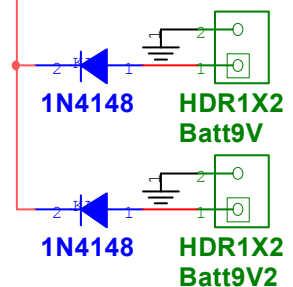
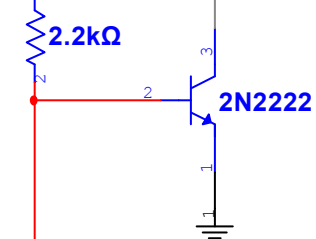
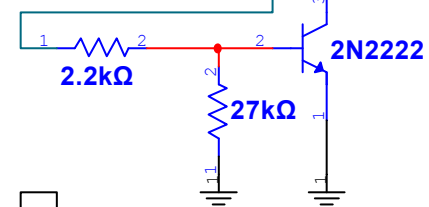
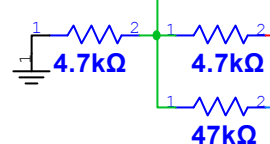
**HDR2X5  
IDC10**



**HDR1X15  
Arduino Strip Bottom**



HDR1x18 - Arduino  
1 - 0 | seriale tx  
2 - 1 | seriale ex  
3 - 2 | NTX2  
4 - 3 | DS18B20  
5 - 4 | DHT22  
6 - 5 | LED  
7 - 6 | SIRENA  
  
17 - 16 | SDA  
18 - 17 | SCL



IDC 10 pin

- 1. Vcc
- 2. DS18B20
- 3. DHT22
- 4. LED
- 5. MPL115A2 SCL
- 6. MPL115A2 SDA
- 7. /
- 8. Vcc Sirena
- 9. GND Sirena
- 10. GND